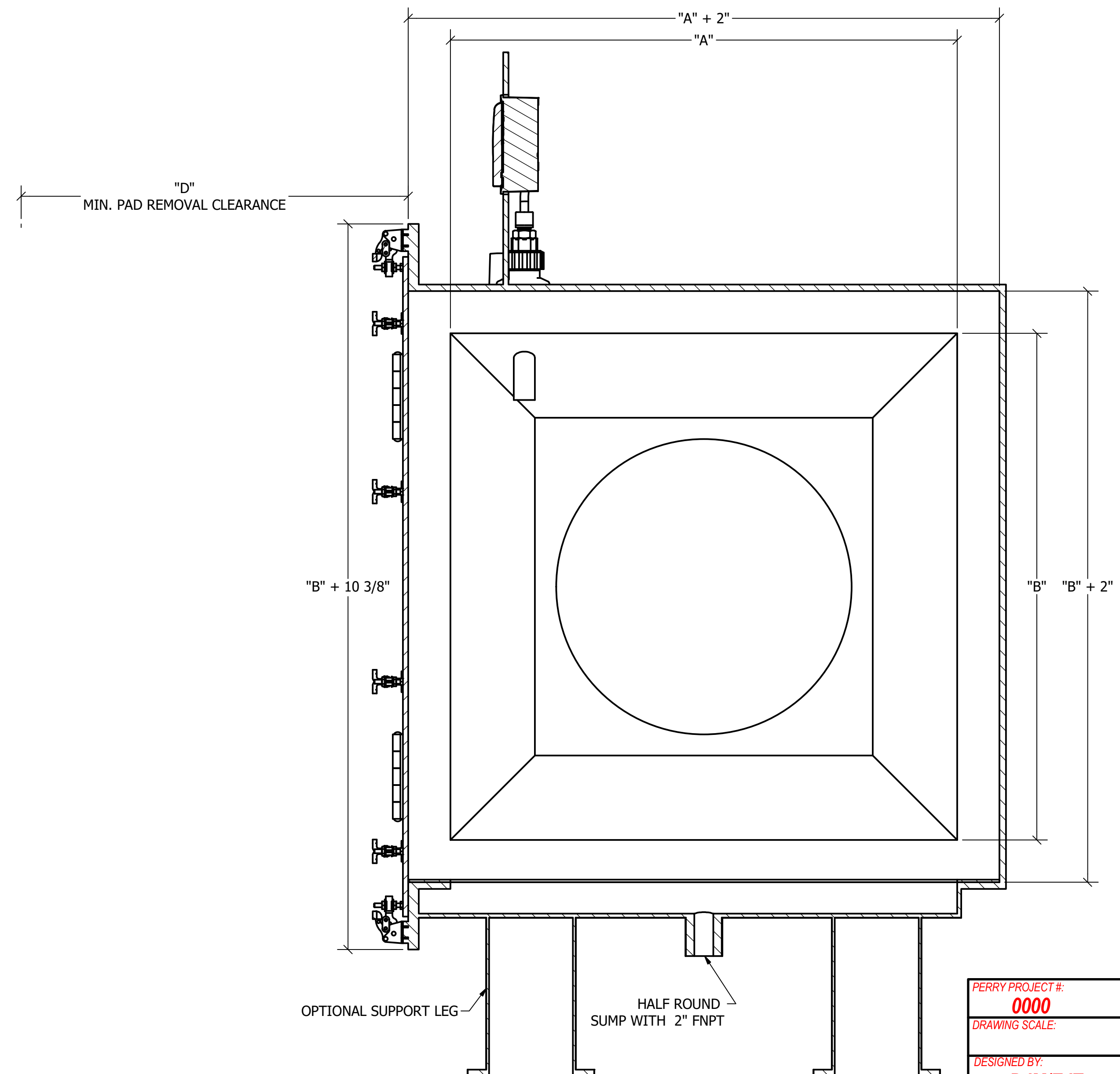


GENERAL NOTES:

1. FIBERGLASS HOUSING TO BE FABRICATED UTILIZING INTERPLASTIC 8401 VINYL ESTER RESIN PER ASTM D3982.
2. HOUSING TO BE GELCOATED WHITE OR GRAY AFTER FABRICATION IS COMPLETE.
3. UNIT TO BE SHIPPED WITH MIST ELIMINATOR PAD INSTALLED.
4. UNIT TO BE SUPPLIED WITH QUICK RELEASE LATCHES AND GASKETS FOR ALL FLANGES. A BOLTED ACCESS DOOR IS AVAILABLE UPON REQUEST. CUSTOM COLORS ARE AVAILABLE UPON REQUEST.
5. UNIT TO BE SUPPLIED WITH DWYER MAGNEHELIC DIFFERENTIAL PRESSURE GAUGE WITH TUBING AND FITTINGS AS REQUIRED.
6. SEE "E" DIMENSION FOR MINIMUM CLEARANCE REQUIRED TO REMOVE; CLEAN AND MAINTAIN FILTER PADS.
7. MIST ELIMINATOR DESIGNED TO KEEP DRY PRESSURE DROP <1.0" W.C.
8. INTERNAL PAD SUPPORTS WILL BE DETERMINED BY PERRY FIBERGLASS.
9. LINED UHMW HOUSING SLIDER AVAILABLE UPON REQUEST.
10. INLET AND OUTLET CONNECTIONS SHALL BE SIZED FOR A MAXIMUM AIR VELOCITY OF 2,500 F/M.

TABLE							
AIR FLOW	"A"	"B"	"C"	"C1"	"D"	# OF SEGMENTS	WEIGHT
400	12	12	8	8	20	1	13
500	13	13	8	8	21	1	15
600	15	15	12	12	23	1	19
700	16	16	12	12	24	1	20
800	17	17	12	12	25	1	23
900	18	18	12	12	26	1	25
1000	19	19	12	12	27	1	27
1100	20	20	12	12	28	1	30
1200	21	21	12	12	29	1	32
1400	22.5	22.5	12	12	30.5	1	36
1500	24	24	16	16	32	1	40
1800	25.5	25.5	16	16	33.5	1	44
2000	26.75	26.75	16	16	34.75	1	48
2200	28	28	16	16	36	2	52
2400	29.5	29.5	16	16	37.5	2	58
2600	30.5	30.5	16	16	38.5	2	61
2800	31.75	31.75	16	16	39.75	2	65
3000	33	33	16	16	41	2	71
3200	34	34	16	16	42	2	75
3300	34.5	34.5	20	20	42.5	2	76
3400	35	35	22	22	43	2	78
3450	35.25	35.25	22	22	43.25	2	80

* FOR PAD THICKNESS AND TYPE CONSULT PERRY FIBERGLASS

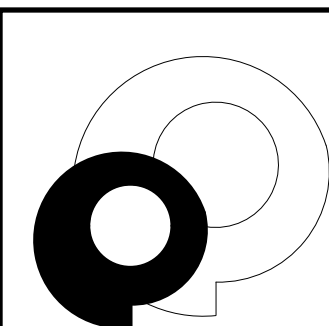


SECTION VIEW B-B

**LOW FLOW MIST AND GREASE ELIMINATOR
GENERAL ARRANGEMENT**

3,450 CFM AND UNDER

PERRY PROJECT #: 0000	
DRAWING SCALE: HOC	
DESIGNED BY: DJM/EJT	
DRAWN BY/DATE: HOC	
CHECKED BY: J. JACOBS	
SHEET SIZE: D (22x34)	REVISION: 0
DRAWING #: D1	



33660 PIN OAK PARKWAY
AVON LAKE, OHIO 44012

PHONE: 321-609-9036
FAX: 321-609-9003
www.PerryFiberglass.com

Perry Fiberglass Products, Inc.

321.609.9036

DUCTWORK, PIPING, STORAGE TANKS, SCRUBBERS, CARBON ADSORBERS, AIR STRIPPERS, FANS, DAMPERS, AND ADVANCED FABRICATIONS

THIS DOCUMENT IN DESIGN AND DETAIL IS THE PROPERTY OF PERRY FIBERGLASS PRODUCTS, INC.; ANY USE OR DISCLOSURE WITHOUT THE WRITTEN PERMISSION OF PERRY FIBERGLASS PRODUCTS, INC. IS STRICTLY FORBIDDEN.